



SAND SHERPA TRAILERS

**EXPLORE.
WORK. SLEEP.**

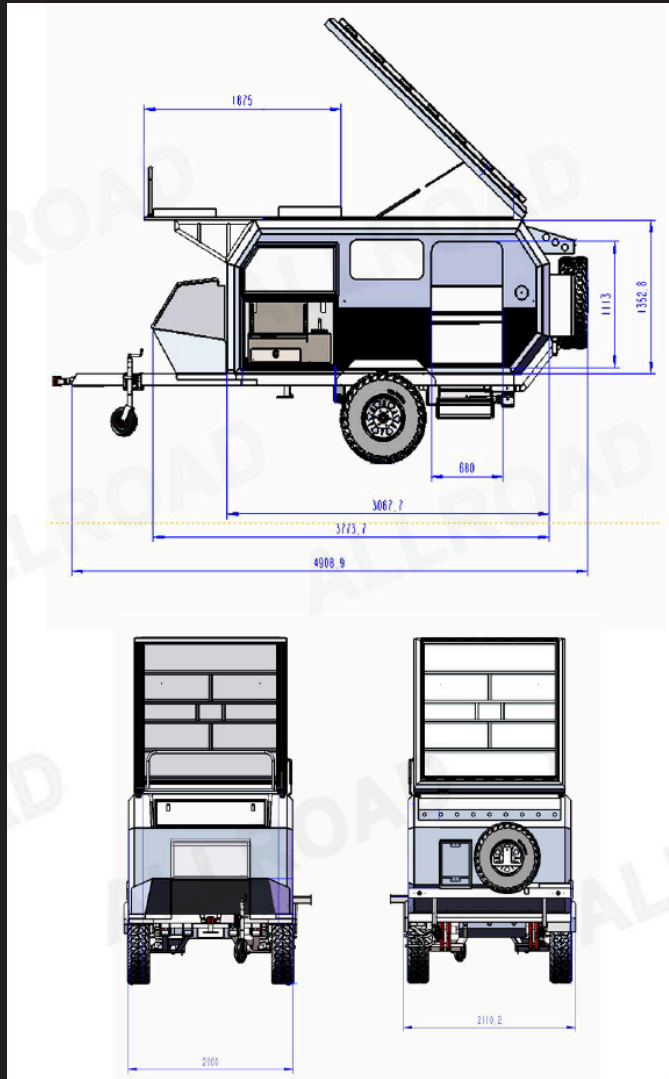
SANDSHERPA.COM



OUR SAND SHERPA EXPEDITION TRAILERS ARE THE ULTIMATE IN REMOTE LIVING, INCORPORATING MODERN COMFORTS AND RUGGED RUNNING GEAR SUITED TO TACKLING THE TOUGHEST TERRAIN.







OUR UNITS INCORPORATE



SLIDE OUT KITCHEN WITH HOT AND COLD WATER FAUCET



DINING TABLE AND STORAGE CABINETS



A MATTRESS THAT CAN BE ASSEMBLED FOR 3-4 PEOPLE



THESE UNITS CAN BE
POSITIONED BY ANY 4X4

BASIC SPECS

OVERALL SIZE	4913(L)*2110(W)*2284(H)/MM
TENT OPEN HEIGHT	3150MM
INNER BODY SIZE	3068(L)*1998(W)*1349(H)/MM
BERTH	4
TARE MASS	1450KG
ATM	1950KG

BUILD LIST: CHASSIS & BODY

CHASSIS

ONE-PIECE WELDED AND FULLY HOT DIPPED GALVANIZED CHASSIS WITH TAR PAINT.

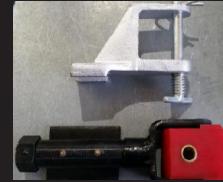


DRAWBAR



3 MM THICK Q345 STEEL SQUARE TUBE A-FRAME.

HITCH



AU POLY HITCH OR USA 2 INCHES HITCH IS STANDARD. (IF THE CUSTOMER DOES NOT CONFIRM, THE PRODUCTION WILL FOLLOW OUR STANDARD SELECTION)

PLUG



50 AMP ANDERSON PLUG.(CHARGE THE BATTERY,GLOBAL UNIFIED STANDARD ADAPTATION)



AU 7-PIN PLUG(ALSO AVAILABLE IN 12PIN AND EUROPEAN AND AMERICAN STYLES) IT SYNCHRONIZES THE LIGHTS OF THE TRUCK AND TRAILER

BODY



ALUMINIUM ALLOY FRAMES TWO-LAYER ALUMINIUM PANEL WITH INSULATION SANDWICH.

POP TOP TENT AND ROOF



WATERPROOF PVC ROOF TOP TENT

THE BRAKE



HAND BRAKE.(PULL UP THE CARAVAN WHEN IT IS PARKED)

SUSPENSION

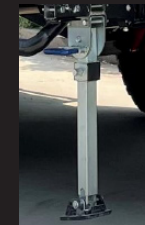


HEAVY DUTY 2* INDEPENDENT SUSPENSION WITH DUAL SHOCK ABSORBERS

STABILIZER LEGS



10 INCH HEAVY DUTY SWING UP JOCKEY WHEEL.



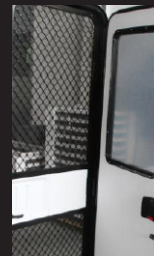
3*DROP DOWN HEAVY DUTY FULLY ADJUSTABLE STABILIZER LEGS. (WHEN THE CARAVAN IS PARKED, STRETCH IT TO THE GROUND)

WHEELS AND TYRES

3 * OFF-ROAD 265/75 R16 TYRES WITH 6 STUD ALUMINIUM ALLOY RIM.



ENTRANCE DOOR



ONE WITH MOSQUITO SCREENS AND ONE WITH WINDOW.

STEPS



MANUAL EXTEND-RETRACT STEP.(WHEN TRAILER IS MOVING, PUSH STEPS TO THE BOTTOM)

INTERIOR - WATER - ELECTRICITY

SLEEPING AREA



THE MATTRESS CAN BE ASSEMBLED AND COMES WITH A FOLDING BERTH, SUITABLE FOR 3-4 PEOPLE

CABINET



PARTICLE BOARD WOOD STORAGE CABINET

FLOOR



POLYTHENE WOOD FLOOR(MORE THAN 6 UNITS CAN SUPPORT CHANGING COLORS)

SLIDE OUT KITCHEN

SLIDE OUT KITCHEN WITH 2 STOVES AGA CERTIFICATION FOR AUS AND NZ MARKET

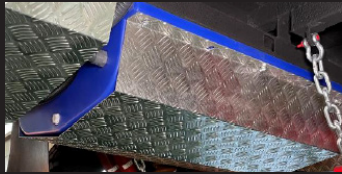


SINK

SINK WITH HOT AND COLD WATER FAUCET.



FRESH WATER



120L*2 SPECIAL LIGHT PLASTIC WATER TANK,THE OUTSIDE IS PROTECTED BY CHECKER PLATE.

WATER HEATER

6L HOT WATER HEATER (GAS)



WATER PUMP

USE CE STANDARD 12V DIAPHRAGM PUMP.

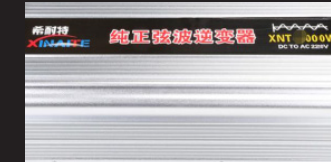


DC CHARGER



30AMP DC CHARGER.(CHARGE THE BATTERY)

INVERTER



INVERTER 2000W(12V DC CONVERT TO 230V OR 110V)

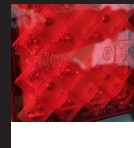
MAIN SWITCH PANEL



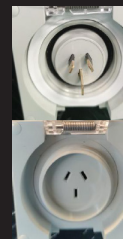
LIGHTING



FULLY SUBMERSIBLE LED LIGHTS. OVER BED READING LIGHT. REAR BRAKE LIGHTS, TURNING LIGHTS, LICENSE PLATE LIGHT, SIDE LIGHT



OUTDOOR WATERPROOF PLUG



WITH OUTDOOR WATERPROOF PLUG AND WATERPROOF SOCKET. CAN PLUG INTO A GENERATOR OR CITY POWER)

BATTERY



2*100AH DEEP CYCLE BATTERIES

OTHER FUNCTIONS

THE FRONT BOX



FRONT ALUMINUM PLATE STORAGE, WITH 1 DIESEL BOTTLE HOLDER (IF THE CUSTOMER ADDS DIESEL HEATER) AND 2 GAS BOTTLE HOLDERS.

EXTERNAL SHOWER



EXTERNAL SHOWER AND AWNING

TV SYSTEM



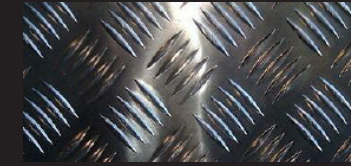
17 INCH LCD TV WITH DVD PLAYER+BLUETOOTH RADIO, AND 2 INTERNAL AND 2 EXTERNAL SPEAKERS

AWNING



MANUAL SHADE AWNING

CHECKER PLATE



THE CHECKER PLATE IS AT THE BOTTOM, PROVIDING SLIP AND SCRATCH RESISTANCE.

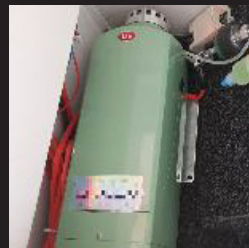
OPTIONAL ADD-ONS

AC



DOMETIC AC(FW 3000)
ROOF AC IS NOT SUPPORTED

DIESEL HEATER



POWER 2 KW ~ 5 KW (CHINESE BRAND)

EXTERNAL REFRIGERATOR



CHINESE BRAND 50L.